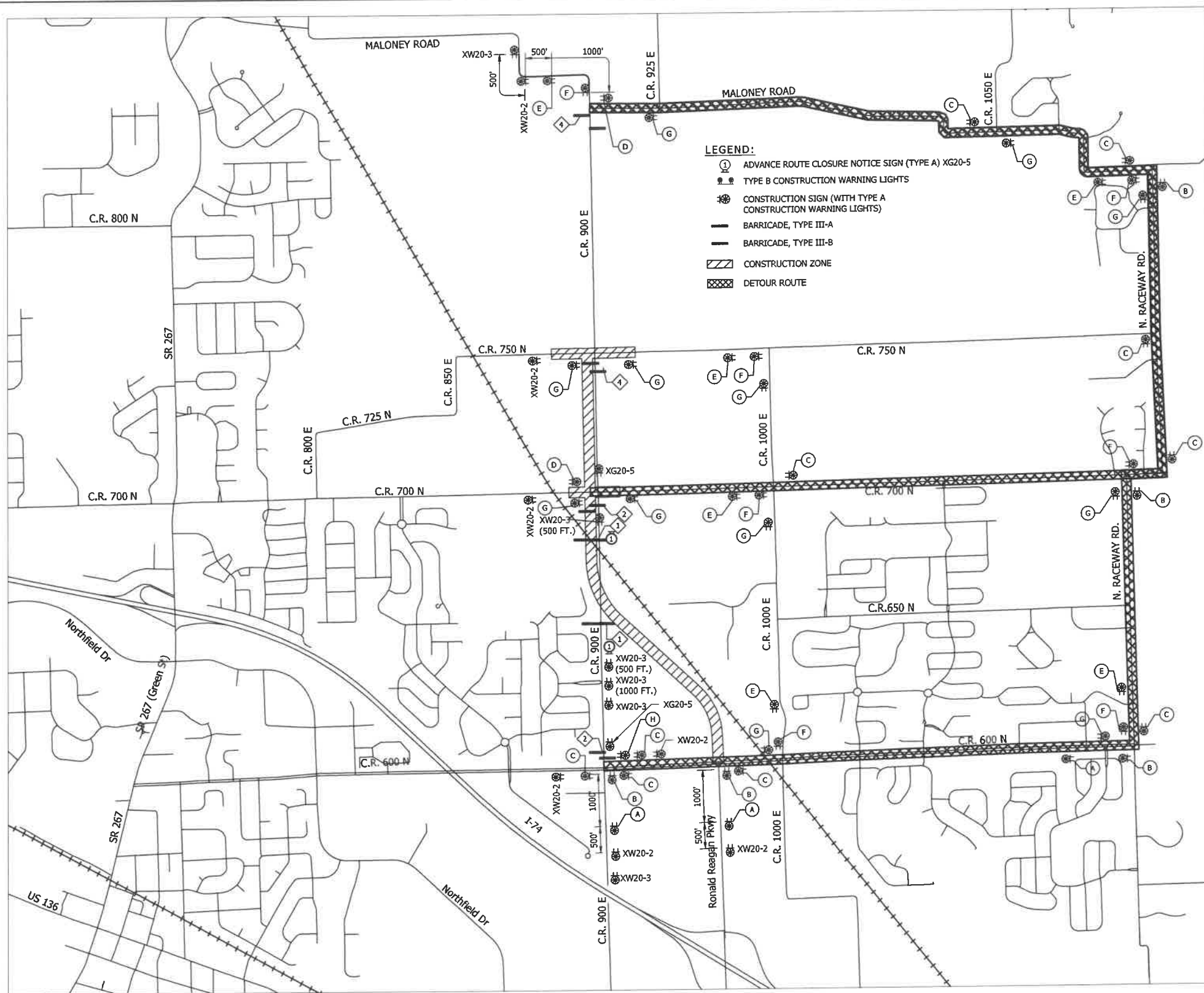


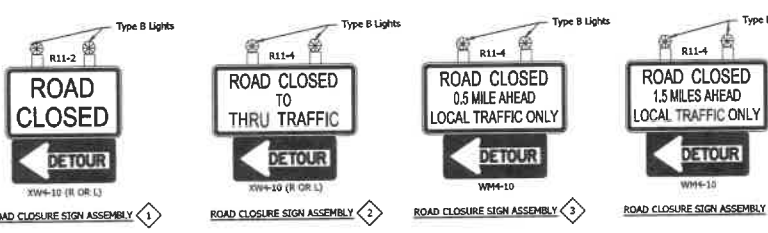
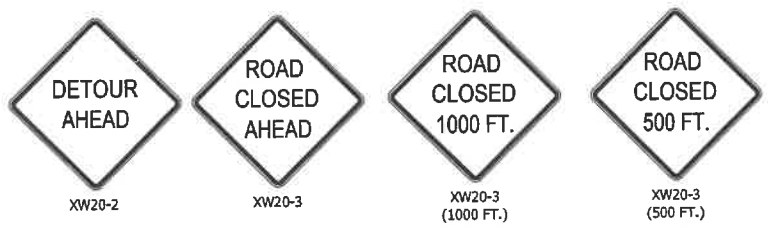
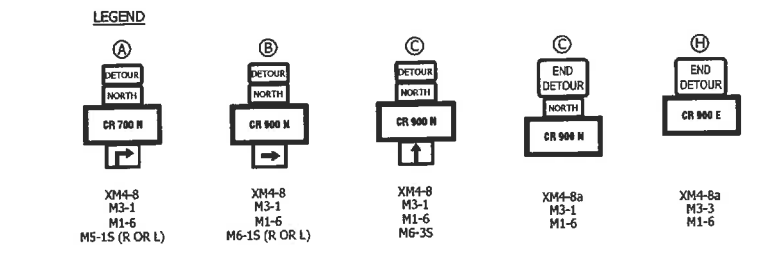
File Name: S:_2017\212-200510\11\Road\CAD\MO\Yen_detours.dwg Plot Date: 12/20/2022 Plotted By: Tedder, A\tdt



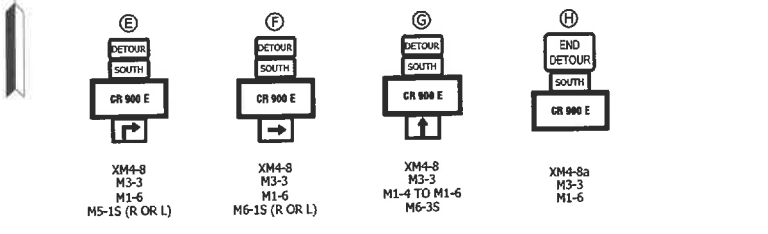
CONSTRUCTION SIGN SCHEDULE				
SIGN NO.	DESCRIPTION	SIZE (IN)	TYPE	EST. QTY.
XW20-2	"DETOUR AHEAD" SIGN	48 x 48	A	4
XW20-3	"ROAD CLOSED AHEAD" SIGN	48 x 48	A	3
XW20-3 (1000 FT.)	"ROAD CLOSED 1000 FT" SIGN	48 x 48	A	1
XW20-3 (500 FT.)	"ROAD CLOSED 500 FT" SIGN	48 x 48	A	2
XG20-5 (1)	ADVANCE ROUTE CLOSURE NOTICE SIGN (C.R. 700 N)	60 x 36	A	2
TOTAL TYPE "A" SIGNS				12

DETOUR ROUTE MARKER ASSEMBLY: 47 EACH
 ROAD CLOSURE SIGN ASSEMBLY: 6 EACH
 TYPE III-A BARRICADES: 72 LFT.
 TYPE III-B BARRICADES: 96 LFT.

- 1 Road Closure Sign Assembly with Type A Barricades (4 x 12 = 48 LFT), R11-2 and XM4-10 (R) or (L)
- 2 Road Closure Sign Assembly with Type B Barricades (6 x 12 = 72 LFT), R11-4 and XM4-10 (R) or (L)
- 3 Road Closure Sign Assembly with Type B Barricades (6 x 12 = 72 LFT), R11-3 and XM4-10 (R) or (L)
- 4 Road Closure Sign Assembly with Type B Barricades (6 x 12 = 72 LFT), R11-3 and XM4-10 (R) or (L)



- GENERAL NOTES**
- ALL MAINTENANCE OF TRAFFIC DEVICES, SIGNS AND PAVEMENT MARKINGS SHALL CONFORM TO THE LATEST EDITION OF THE INDIANA MUTCD.
 - SEE INDOT STD DWG 801-TCDT-01 FOR ADDITIONAL DETAILS.
 - SEE INDOT STD DWG 801-TCLG-01 FOR GENERAL NOTES.
 - ACCESS SHALL BE MAINTAINED FOR LOCAL BUSINESSES AND RESIDENTS AT ALL TIMES.
 - C.R. 700 N AND C.R. 750 N SHALL NOT BE CLOSED AT THE SAME TIME.



LOCHMUELLER GROUP
 3502 Woodview Terrace, Suite 150
 Indianapolis, Indiana, 46268
 PHONE: 317.222.3880
 TOLL FREE: 888.830.6977

JESSICA N. HAWLEY
 REGISTERED
 No. PE11300365
 STATE OF INDIANA
 PROFESSIONAL ENGINEER

RECOMMENDED FOR APPROVAL: *Jessica N. Hawley* 12/21/2022 DATE
 DESIGNER: JNH DRAWN: JNH
 CHECKED: BKA CHECKED: BKA

INDIANA DEPARTMENT OF TRANSPORTATION
 MAINTENANCE OF TRAFFIC
 CR900E DETOUR

HORIZONTAL SCALE	BRIDGE FILE
1"=1000'	32-00089
VERTICAL SCALE	DESIGNATION
N/A	1602280
SURVEY BOOK	SHEETS
ELECTRONIC	8 of 169
CONTRACT	PROJECT
R-44754	1602280